

## Counselling, testing and case management for vulnerable groups in Schleswig-Holstein, Germany

Glaum, Louisa; Kandlen, Konstantin; Brillat, Sylvia; Stelling, Angela; Hansen, Ursula; Welbers, Hildegard; Salvador, Sarah

Landesverband  
Aidshilfe Schleswig-Holstein, Kiel, Germany

### Background

HIV and HCV are still the ongoing challenge in North regions of Germany. Estimated number of new HIV cases in Schleswig-Holstein in the year 2021 was 45 and estimated number of people living with HIV without diagnose is more than 200. New cases of HCV were in the year 2021 – 202, in the year 2022 – 313. Statistics reflects ongoing processes of increasing numbers of new HIV and HCV cases, that can be emerging.

### Risk factors of clients of Check Mobil 12.2023 - 05.2024

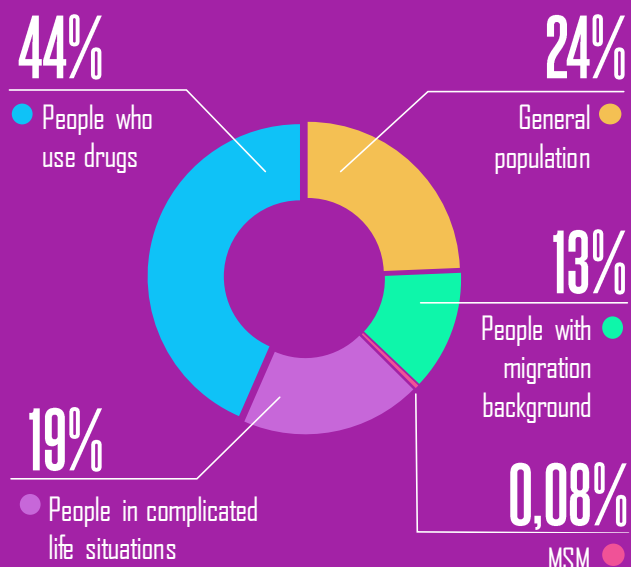


Fig.1 Risk factors of Check Mobil's clients

## Materials & Methods

On the way to eliminate HIV and HCV in the Federal State of Schleswig-Holstein and improve treatment coverage, Aidshilfe Schleswig-Holstein is increasing access to low threshold testing to increase coverage in HIV and HCV testing, especially in key groups in a huge northern territories of 15.800 sq.kms and population of 2,9 million, also as access to HIV and HCV treatment via linkage and case management.

We present data for the Check Mobil low-threshold testing in the period of 12.2023-05.2024 in the Federal State of Schleswig-Holstein.

Examination was done by antibodies express-tests against HIV and HCV followed by pre- & post testing counselling, printed materials on HIV, STIs, HCV and condom dispensation. In case of reactive result testing followed by linkage to care or case management. Every testing is followed by infomaterials, coffee, snacks and nice talks. Test bus is not marked or branded as HIV testing bus, to keep privacy and anonymity.



## Results

In the time frame December 2023 till May 2024 we tested for both HIV and HCV 223 clients in 18 locations all over the Federal State. Testing locations are always connected to places relevant to key groups (parks, services for homeless and addicted people, also as social support facilities).

In past 6 months of active testing we detected 10 reactive tests for HCV and no reactive for HIV.

Positivity rate for HCV is 4,48%, 4 patients were treated for HCV successfully and 2 are in the process of linkage.

Check Mobil shows its efficiency and productivity, because it goes to key groups and those people, who will never come to medical help without support and mentoring.

Project is planned to be further developed in the whole Federal State.

## Conclusion

Check Mobil Project shows its high efficiency and demand, and planned to be developed to other parts of Federal State with improvement of services and spreaded to other groups of clients.